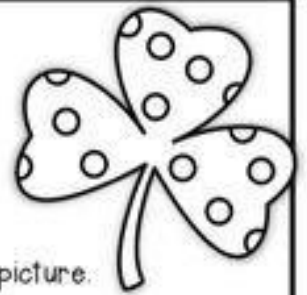
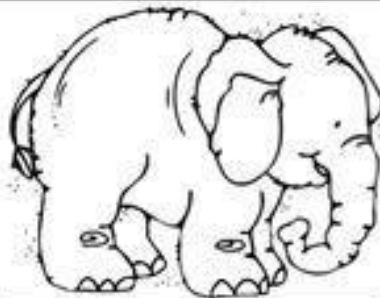
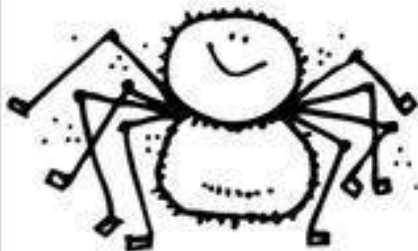
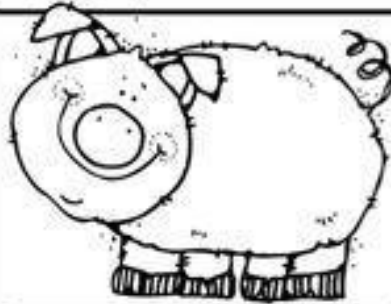
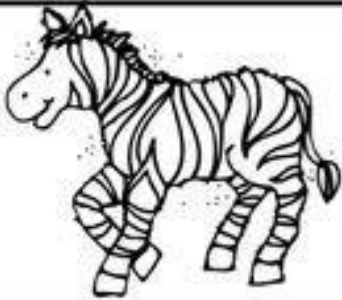


Name _____

Animal Clues



Directions: Read the clues at the bottom of the page. Cut and paste to match the picture.



© Annie Moffatt © The Moffatt Girls 2014

I am fat and pink.
I like to eat.
Who am I?

I am green and I
have a shell.
Who am I?

I have eight legs.
I can spin a web.
Who am I?

I am big and gray.
I have a trunk.
Who am I?

I am black and
white. I have stripes.
Who am I?

I am fluffy and I
can hop.
Who am I?